

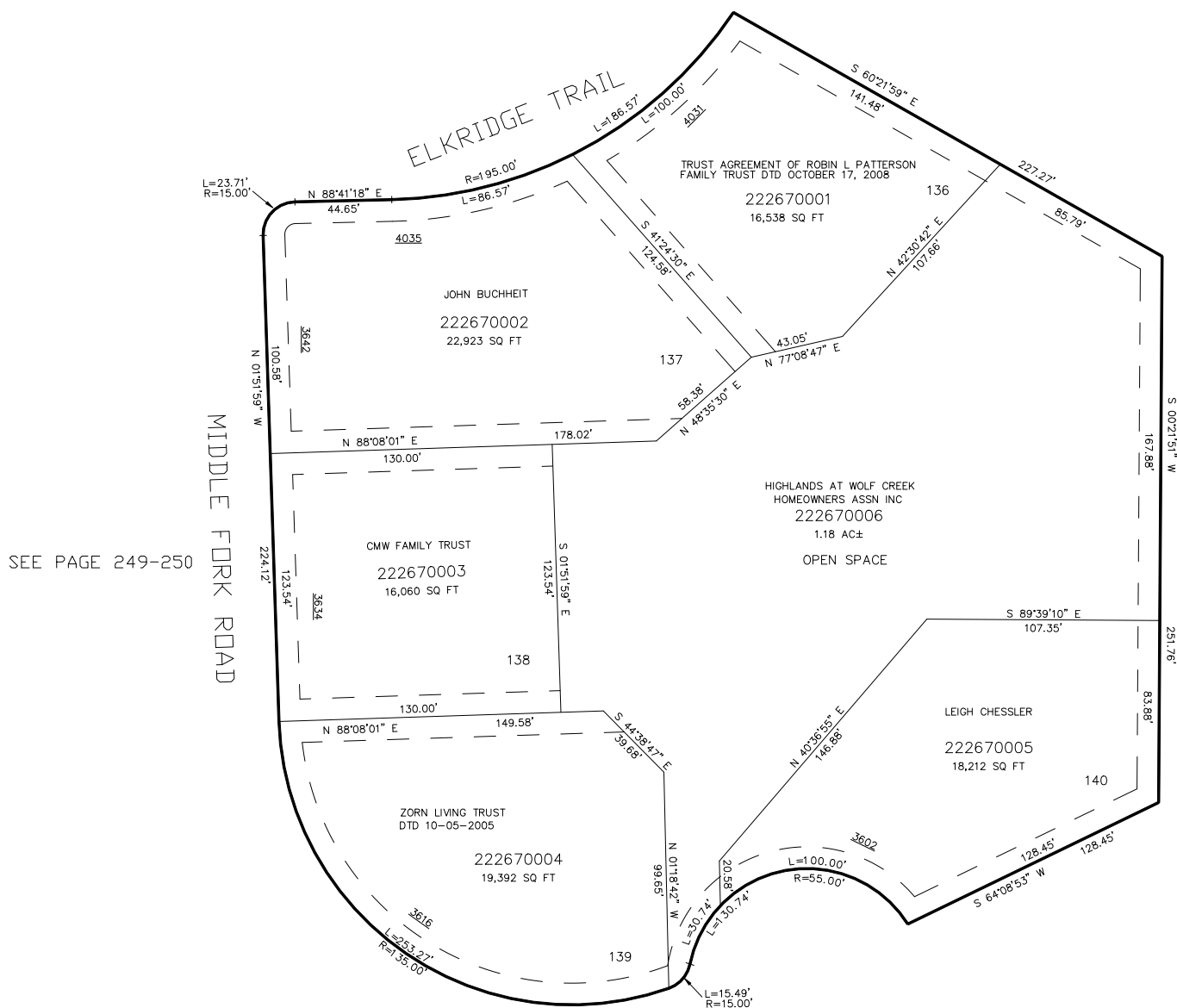
PART OF THE SW.1/4, OF SECTION 23, T.7N., R.1E., S.L.B. & M.
THE HIGHLANDS AT WOLF CREEK PHASE 9

IN WEBER COUNTY

TAXING UNIT: 203

SCALE 1" = 40'

SEE PAGE 247



10' UTILITY & DRAINAGE EASEMENTS EACH
 SIDE OF PROPERTY LINES AS INDICATED
 BY DASHED LINES EXCEPT AS OTHERWISE
 SHOWN.

FOR COMPLETE ENG DATA SEE
 ORIGINAL DEDICATION PLAT IN
 BOOK 65, PAGE 37 OF RECORDS.

SEE PAGE 249

FOR TAX PURPOSES ONLY

BK 01-07